

DIRECTIONS

- 1) Students will choose a mat.
- 2) Students will ask themselves "What has the same beginning sound as __?", using the picture in the center of the mat.
- 3) Students will then use clothespins to clip the pictures that have the same beginning sound as the picture in the center of the mat.

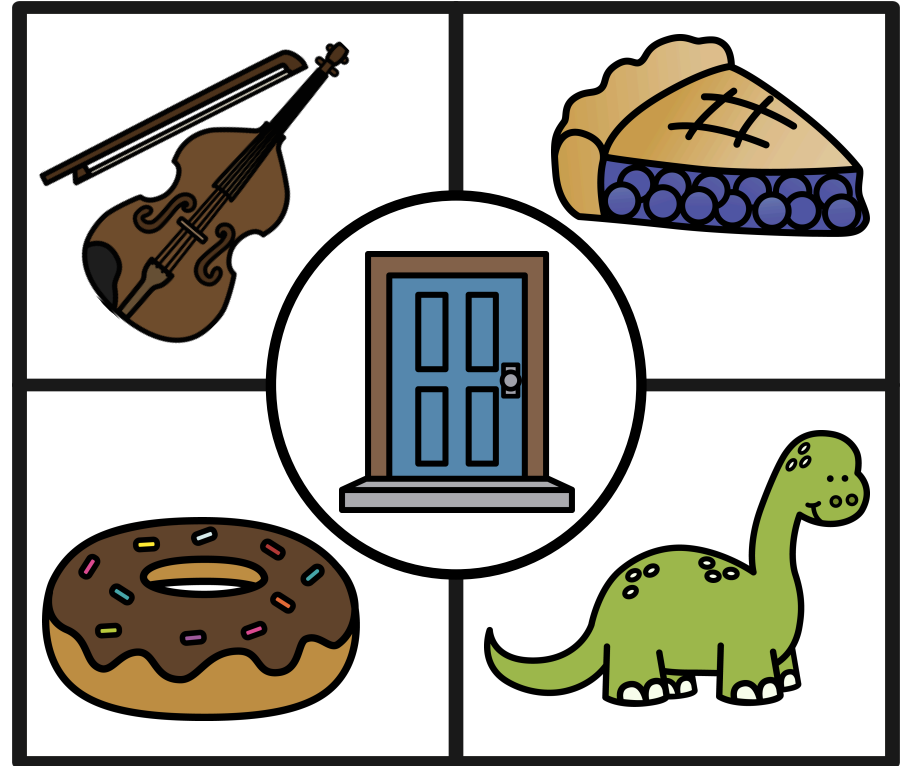
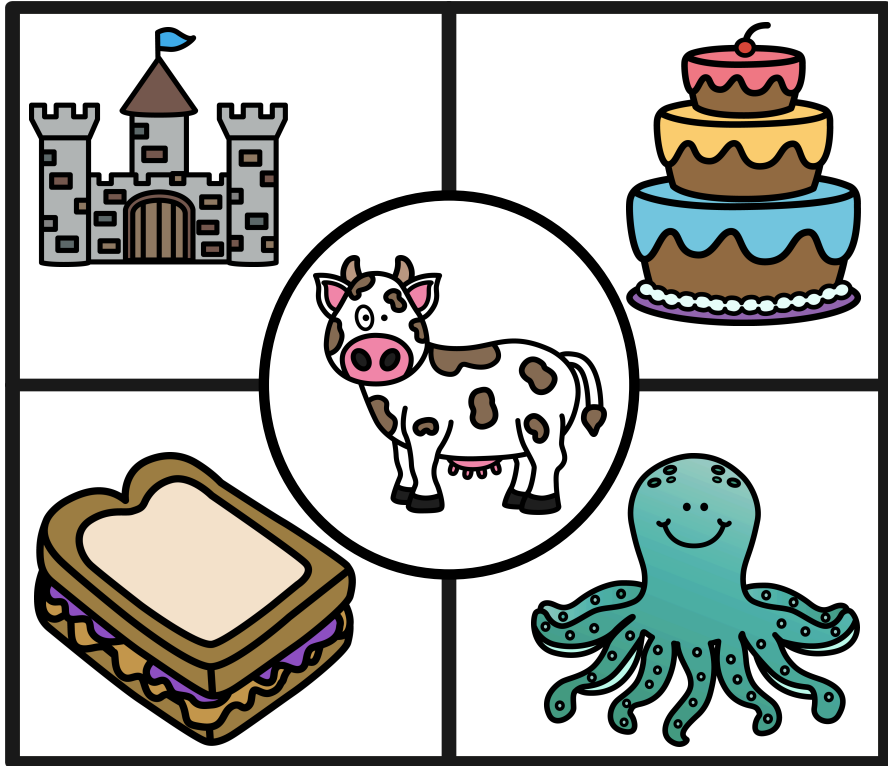
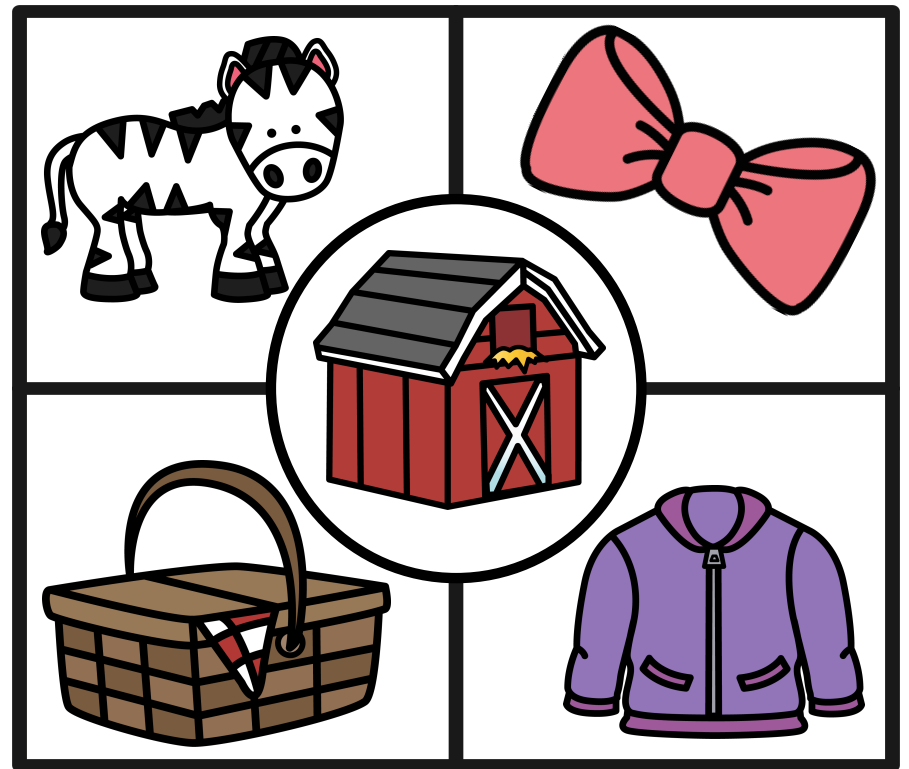
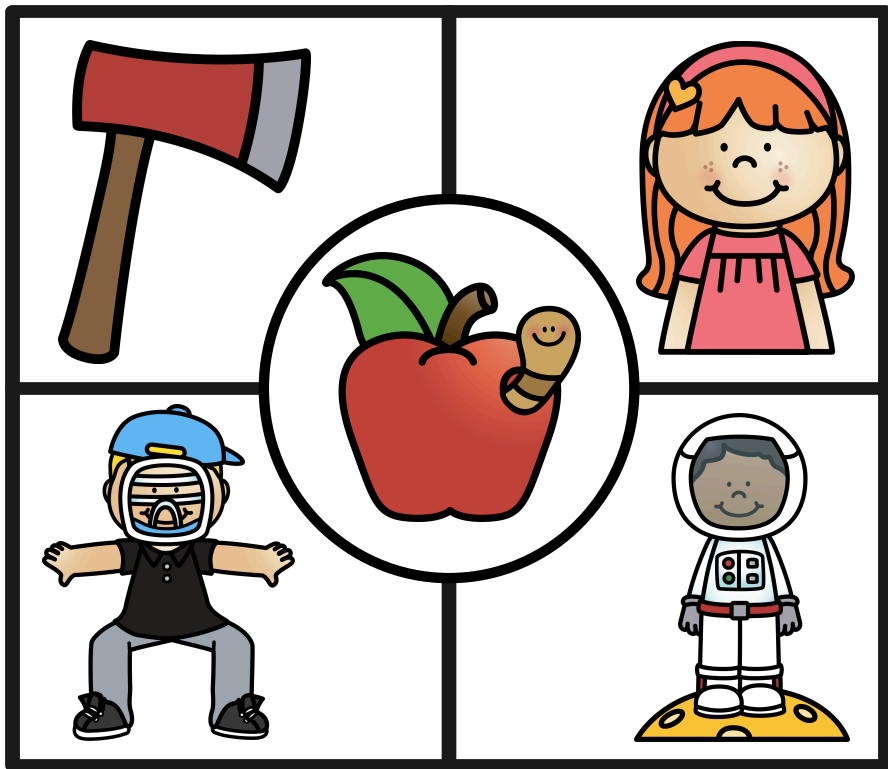
QUICK DIFFERENTIATION

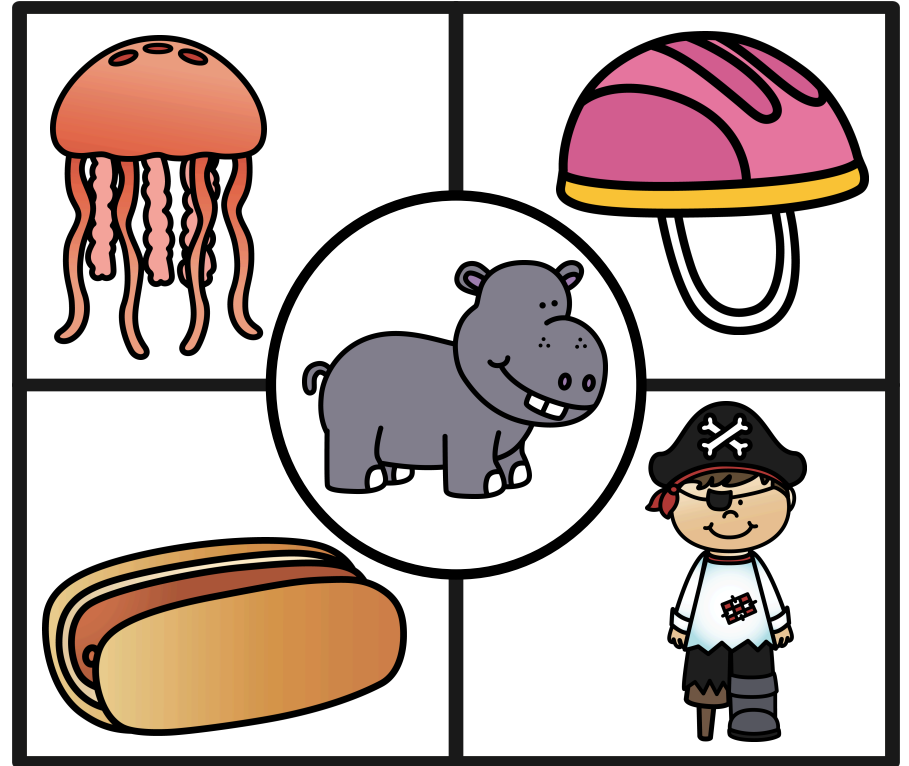
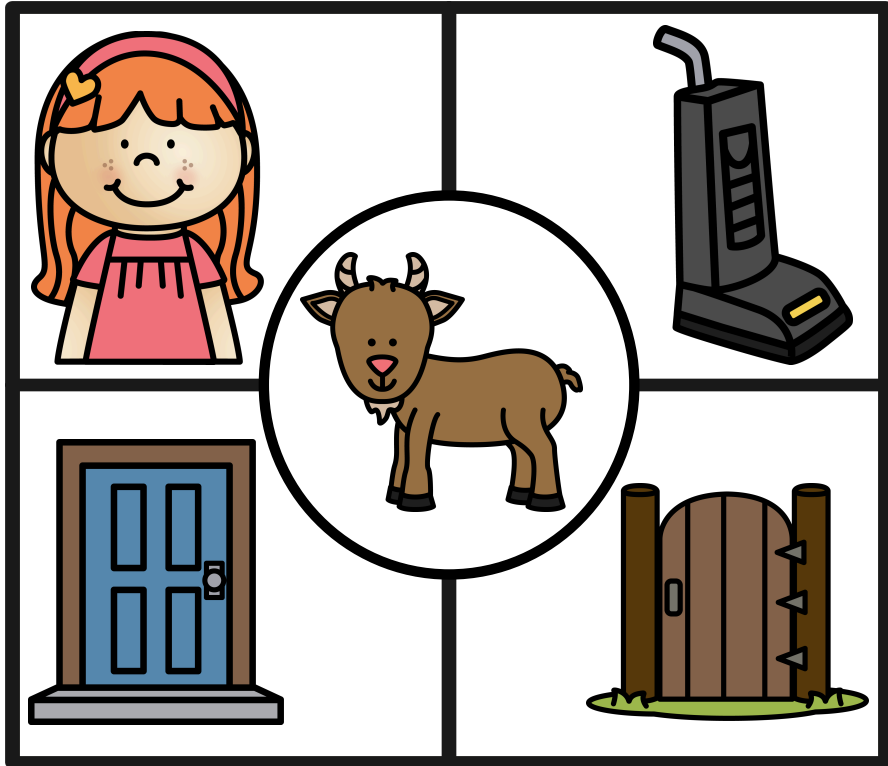
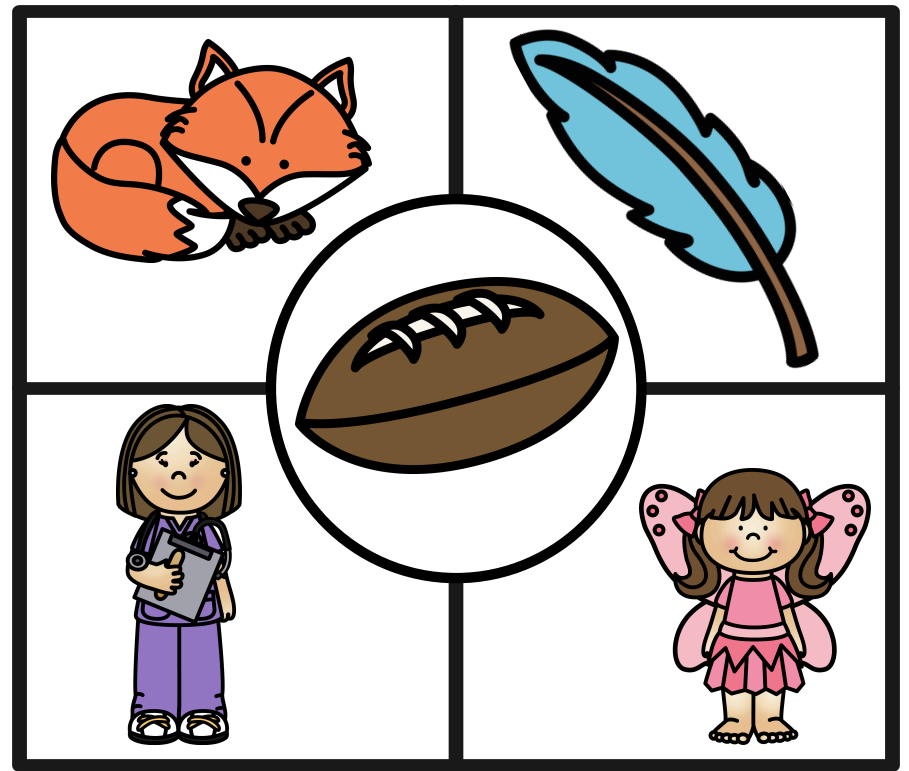
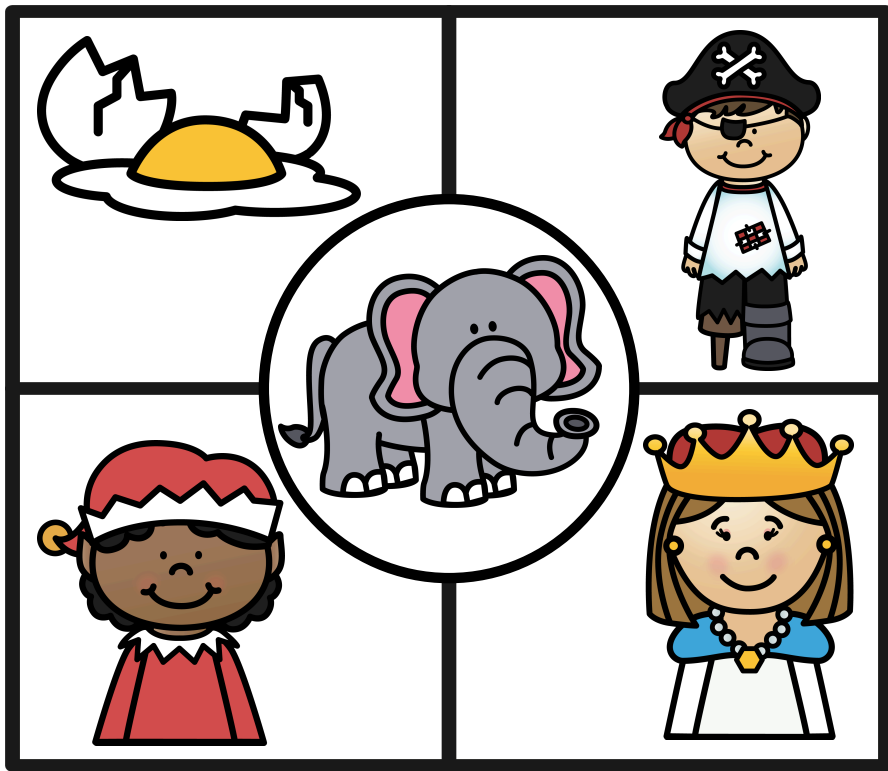
KIDS THAT NEED A CHALLENGE:

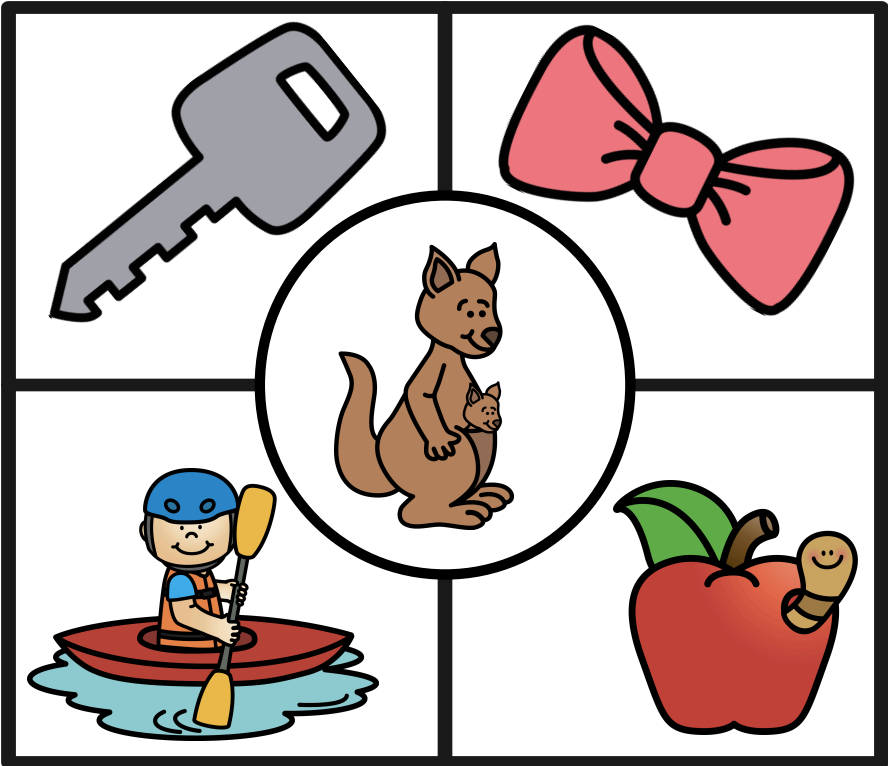
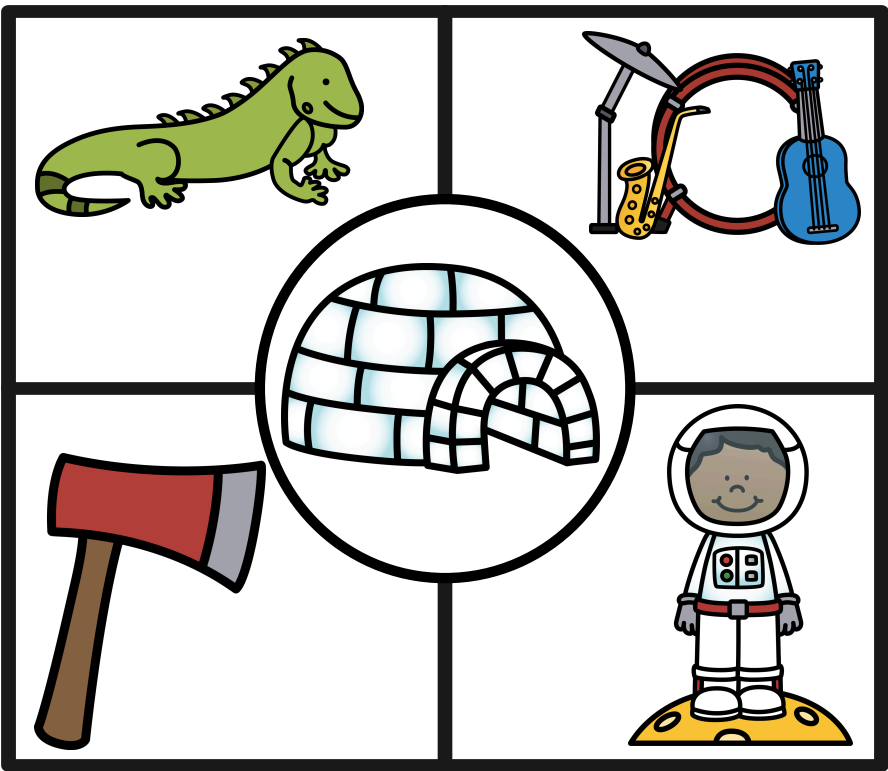
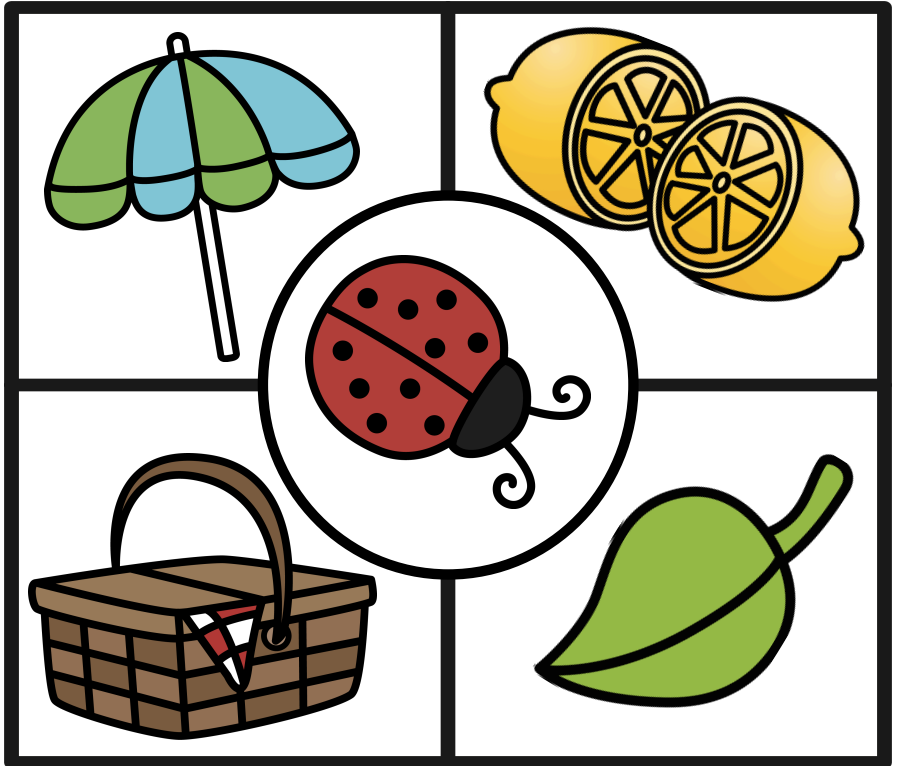
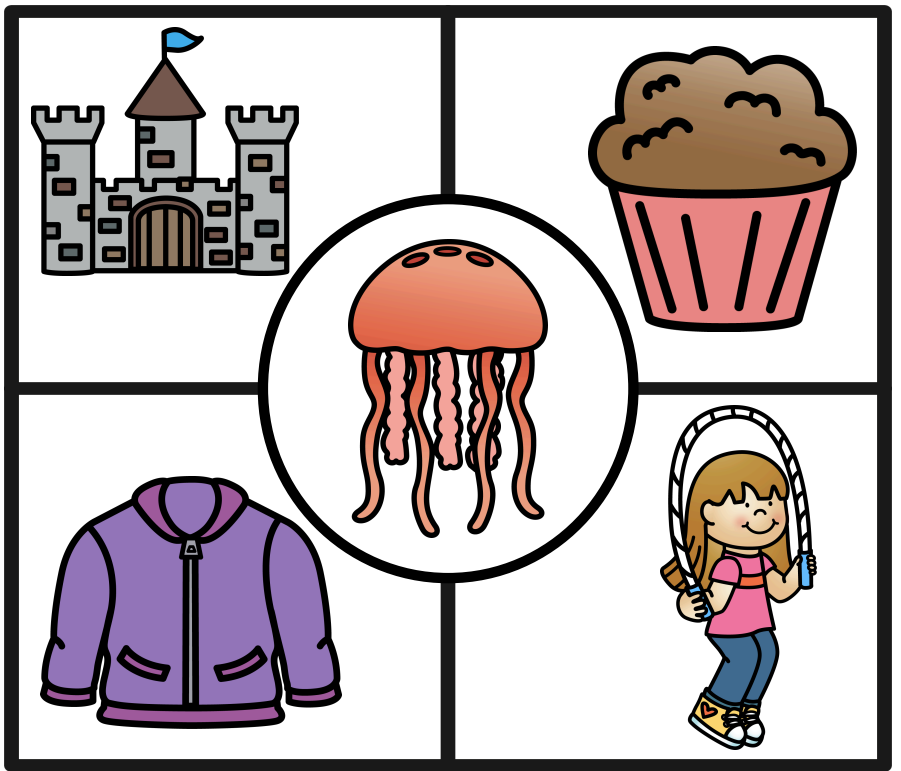
- 1) Students can generate another word that begins with the same sound as the pictures they have clipped.
- 2) Students can try to write the words of the pictures they have clipped and notice the same letter at the beginning of each.

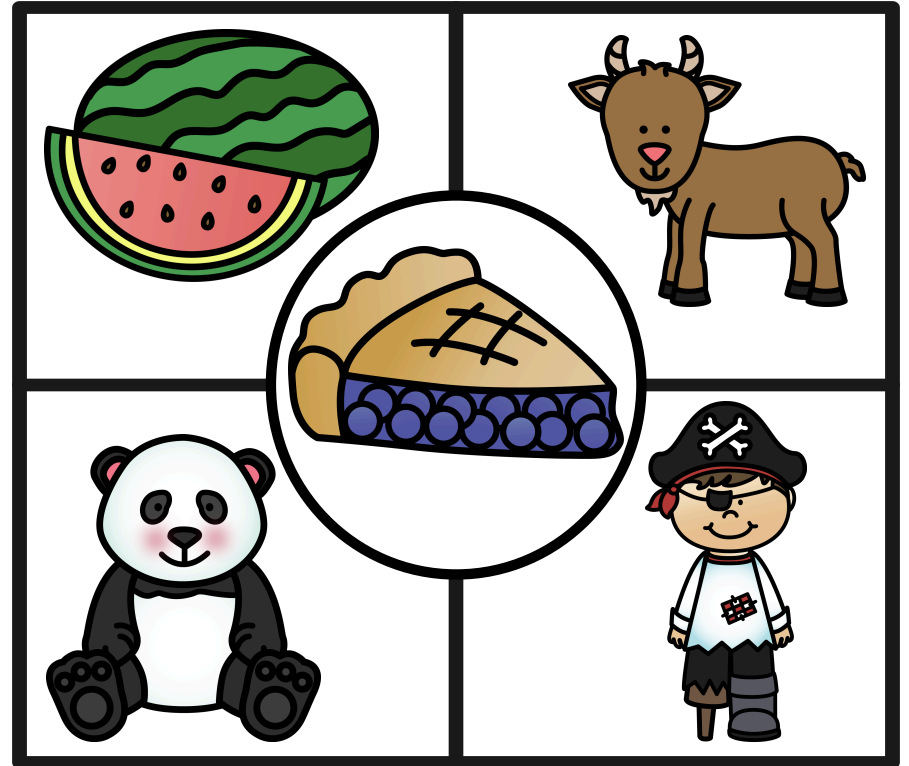
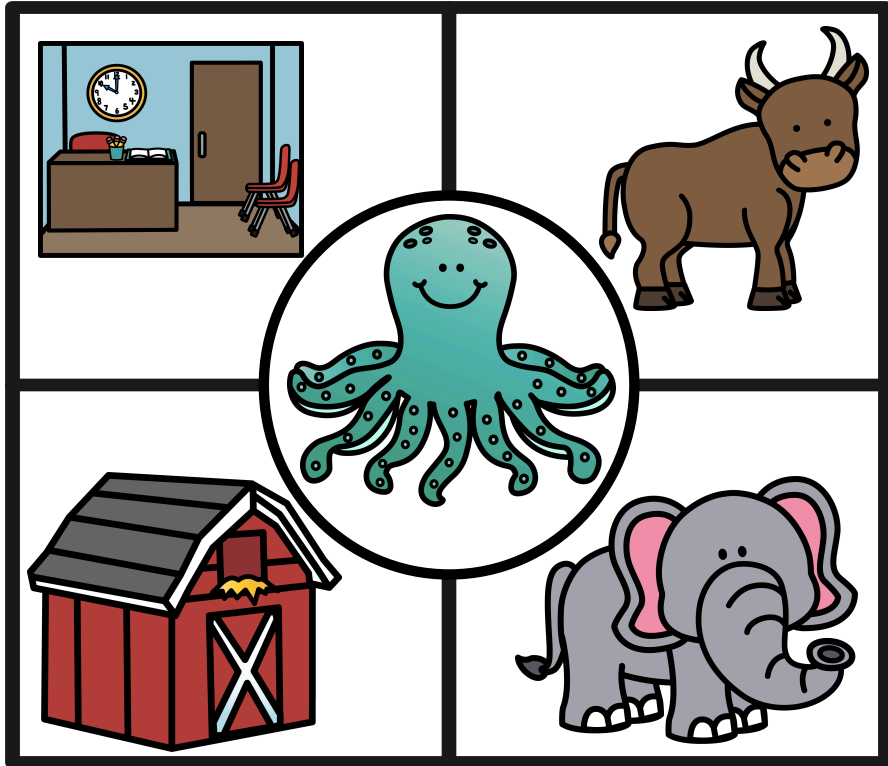
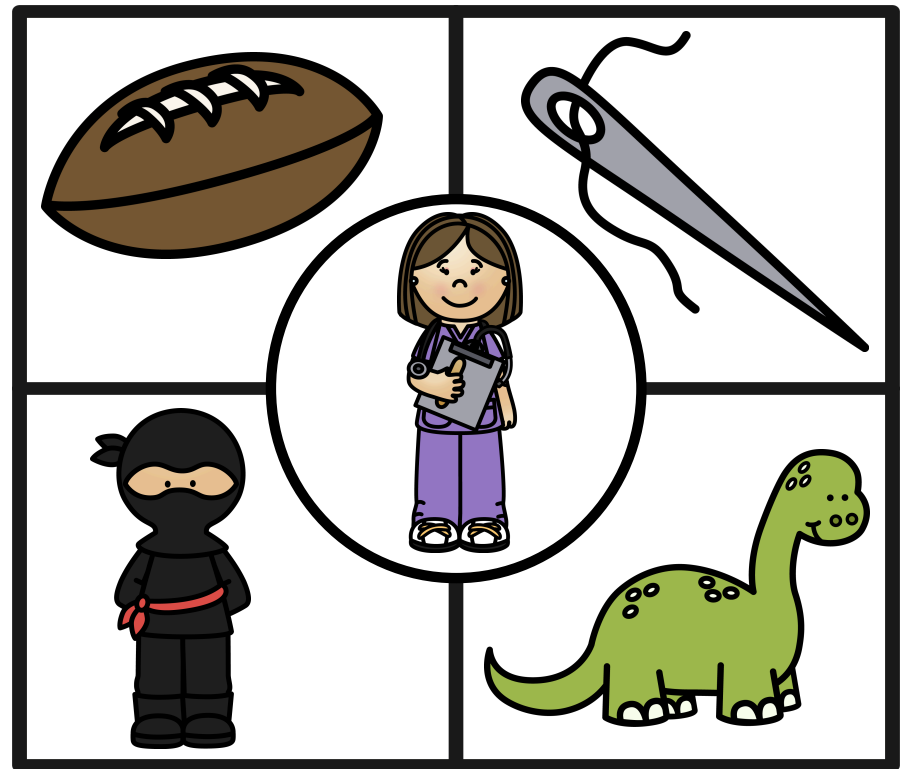
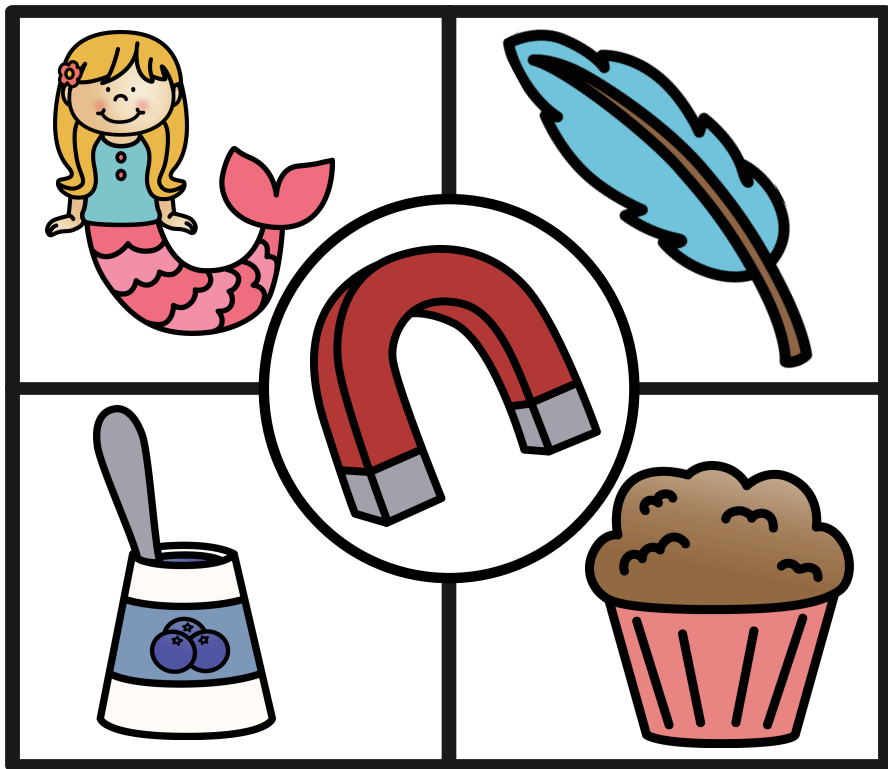
KIDS THAT NEED A REVIEW:

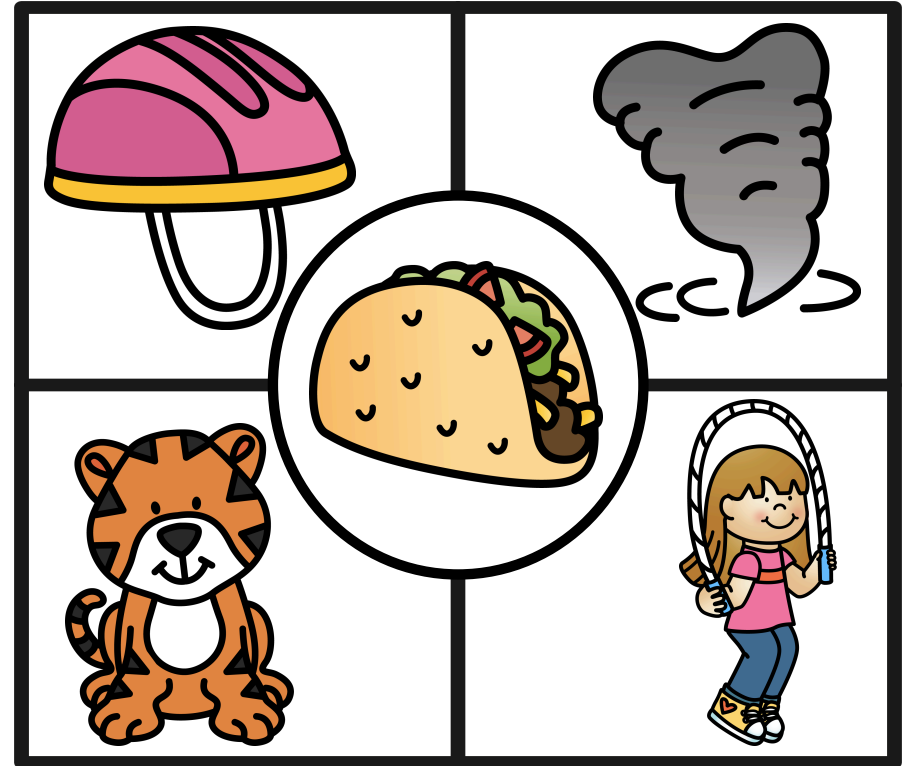
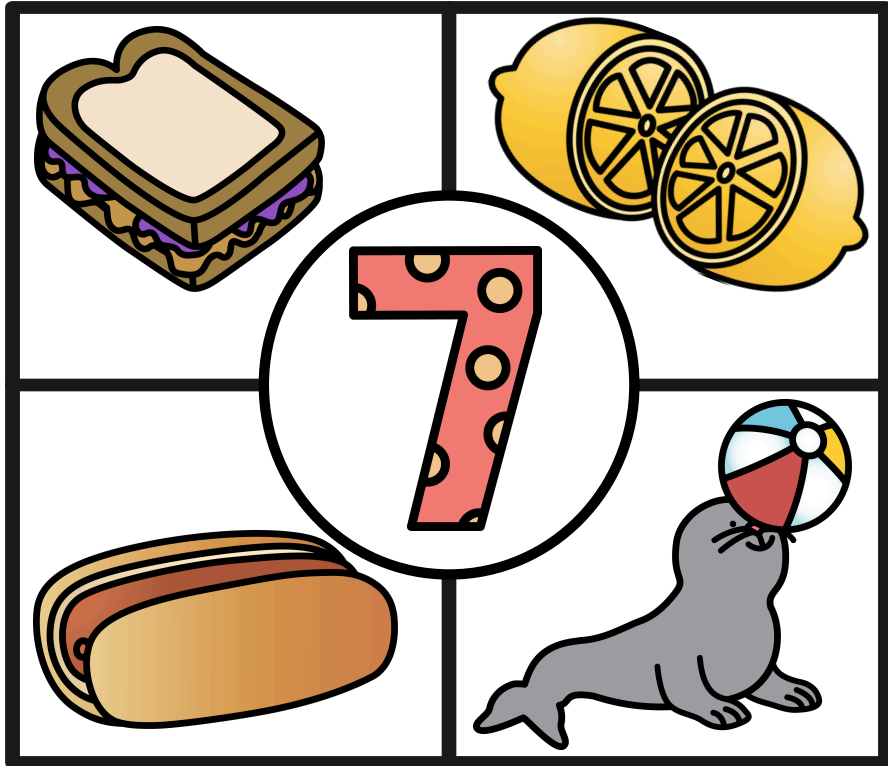
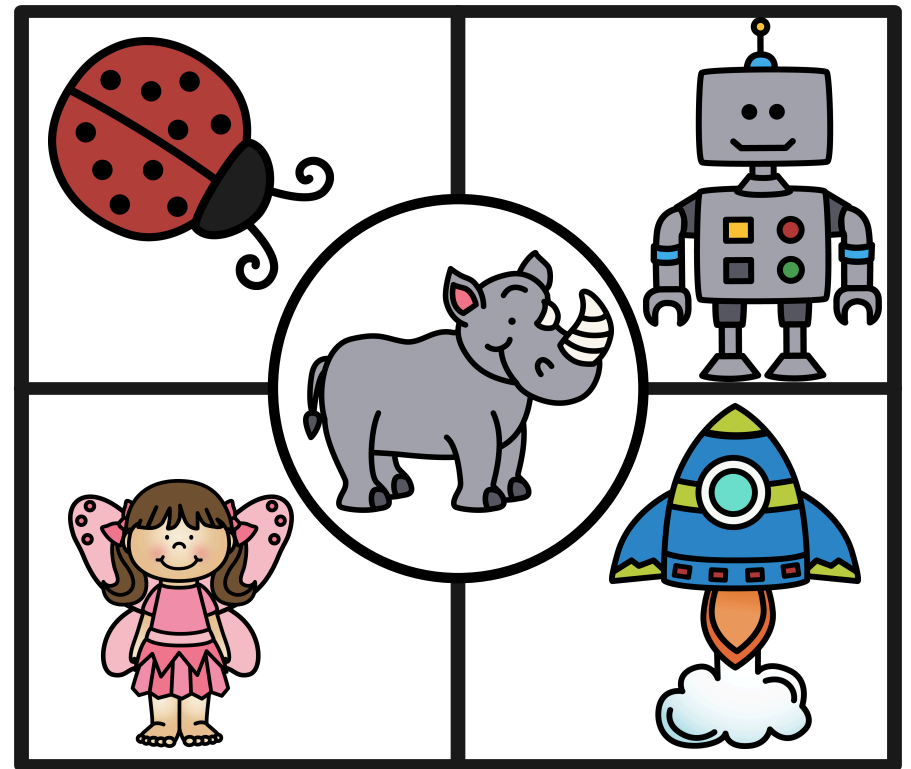
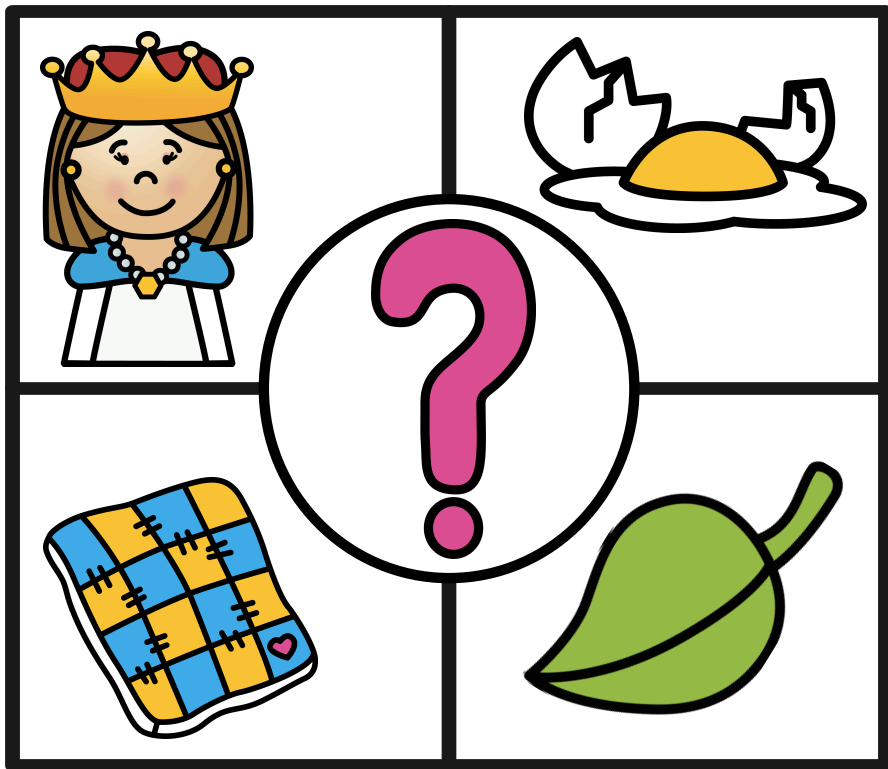
- 1) Pull students up to a small group and emphasize the beginning sounds as you say the words.
- 2) You can make these strips self checking, by adding marks on the back of the matching beginning sounds.

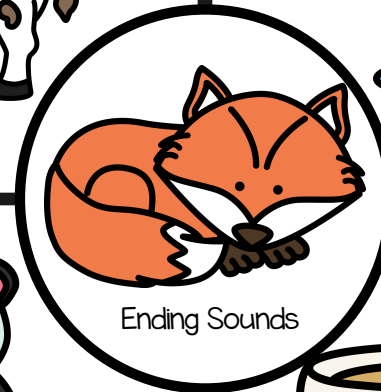
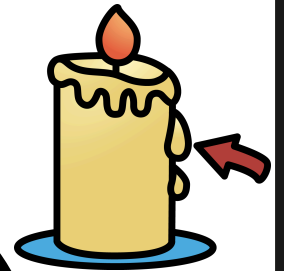
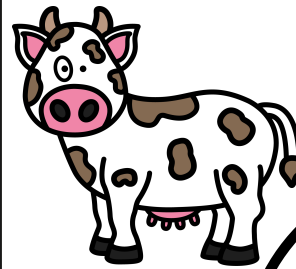
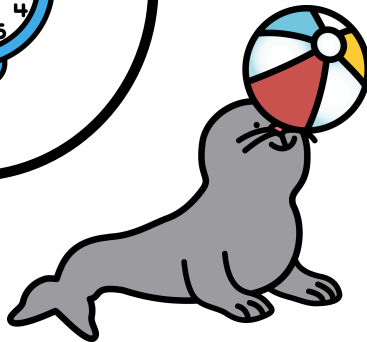
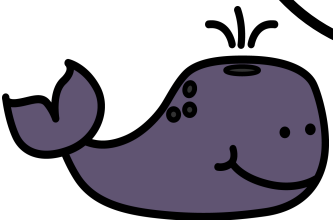
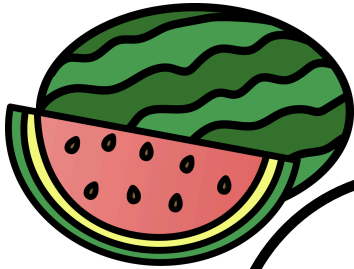
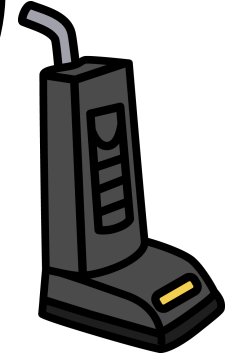
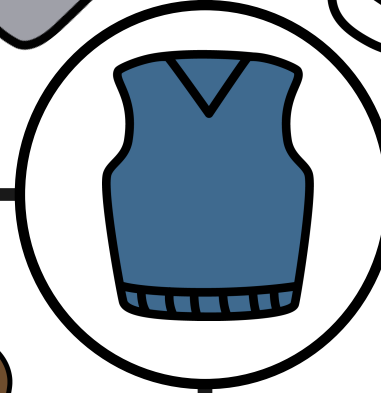
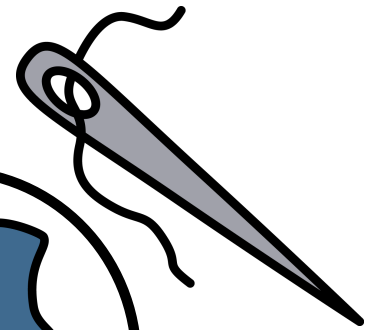
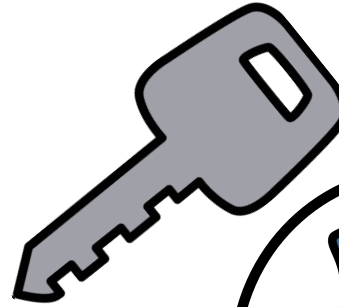
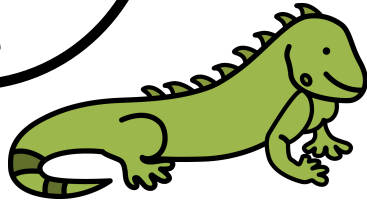
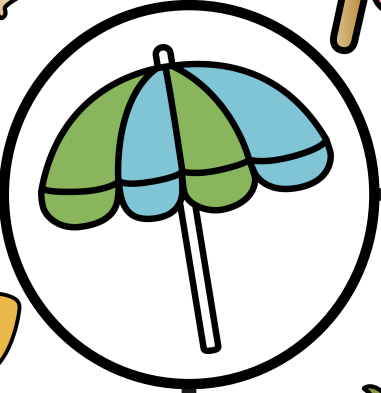












Ending Sounds



