

SEESAW

MONTHLY CENTERS

FIRST GRADE



Collect the Nuts

Long Vowel **o** Short Vowel **o**

Drag the pictures to match the vowel sounds.

An activity card with an orange background. At the top, it says 'Collect the Nuts'. Below that, it lists 'Long Vowel o' and 'Short Vowel o'. There are several acorn illustrations and a squirrel. A small instruction says 'Drag the pictures to match the vowel sounds.' The letters 'o' and 'o' are shown in large, white, outlined font.

She sees a bug

Drag the checkmark to the correct punctuation.

An activity card with a light blue background. It says 'She sees a bug' and 'Drag the checkmark to the correct punctuation.' There are three sunflowers. The first has a checkmark, the second has an exclamation point, and the third has a question mark. A small illustration of a girl is in the top right corner.

I Can Add!

Drag the lights to show addition.

$16 + 4 =$

Type the answer in the box.

An activity card with a green background. It says 'I Can Add!' and 'Drag the lights to show addition.' There is a Christmas tree and some lights. A math problem $16 + 4 =$ is shown, followed by a box for the answer. A small instruction says 'Type the answer in the box.'

Spell the Word

Drag the letters to spell the word.

An activity card with a pink background. It says 'Spell the Word' and 'Drag the letters to spell the word.' There is a reindeer and some trees. A word box is shown at the bottom.

WHAT IS INCLUDED?

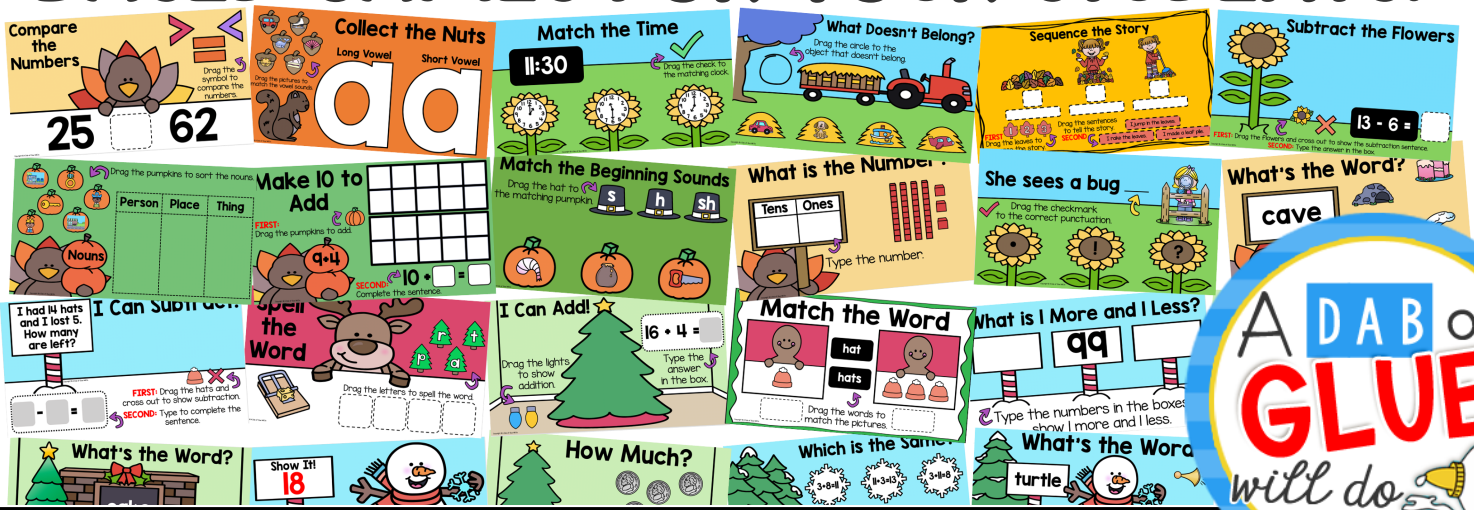


ALL NEW!
Step-by-step instructions with pictures.



ALL NEW!
Parent letter with instructions and pictures!

TONS OF INTERACTIVE, STANDARDS BASED GAMES FOR YOUR STUDENTS!



HOW IT WORKS!

Kids can complete on the computer, a tablet, or even a phone!

Your students can work at home with these standards-based self-checking games.

