

ANTS

an animal study



Cocoon

Silky tread that larvae use to change and grow.



Colon

A group of ants that live together.



Mound

A rounded mass projecting above the surface.



Burrow

A tunnel dug by an animal.



Antenna

A pair of appendages on the head of an ant that are usually sensitive to touch and smell.



Soldier

A large ant that protects the colony.



Worker Ant

A female ant that helps run the community.



Queen Ant

A female ant that lays the eggs.



Ants



Ants are the most common insect except for flies.



Ants are the longest living insect.



There are 20,000 different kinds of ants around the world.



There are one million ants for every human in the world. That is a lot of ants!



Ants have three parts of their body: head, thorax, and abdomen.



Most ants are black or red in color, but some species are green or metallic.



Ants do not have ears. They listen to vibrations from the ground through their feet.



Ants breathe through tiny holes all over their body.



Ants bite or sting. They have the most painful bite of any insect.



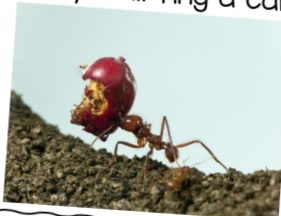
Ants live in colonies. Each colony has a queen.



The queen ant lays eggs, while the male ants mate with the queen.



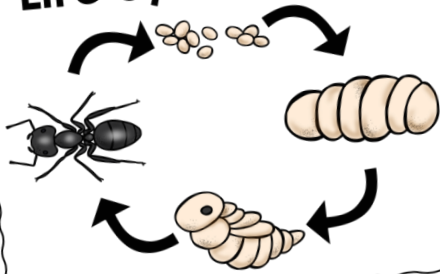
Ants can carry 20 times their own body weight. That would be like you lifting a car!



Ants eat spiders, caterpillars, and snails. Their mandibles are the main weapons of ants.



Life Cycle of Ants



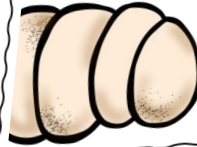
gg

aped and very small.
ize of a period at the
entence.



va

ave no eyes and no
agurgitated by adult
several times as they
er in size.



Pupa

hes a certain size, it will spin a silk
l itself. During this time, the ant
It Form. They look more like an
his stage, but their legs and
shed against themselves.



lit. The entire life
adults are lighter
time. Ants do not
become an adult.



Life Cycle of Ants



gg

aped and very small.
ize of a period at the
entence.



va

ave no eyes and no
agurgitated by adult
several times as they
er in size.



Pupa

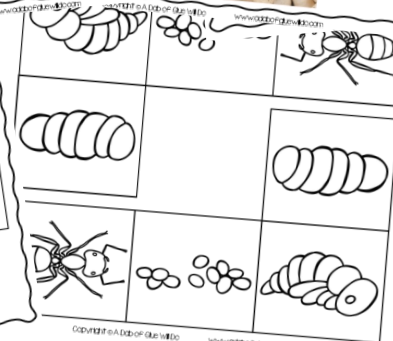
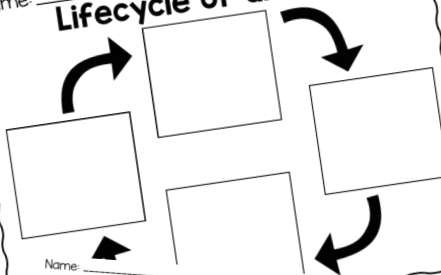
hes a certain size, it will spin a silk
l itself. During this time, the ant
It Form. They look more like an
his stage, but their legs and
shed against themselves.



lit. The entire life
adults are lighter
time. Ants do not
become an adult.

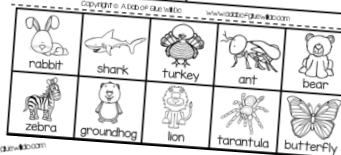
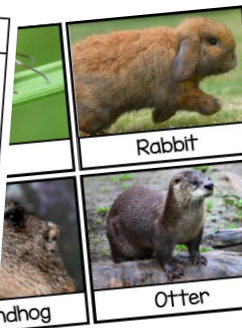


Name: **Lifecycle of an ant**



Do I Burrow?

Yes	No

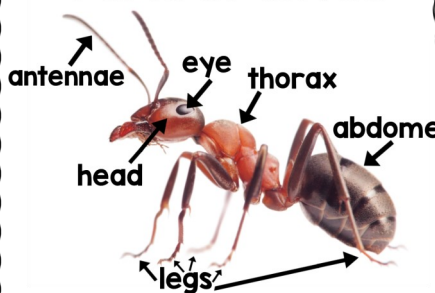


Do I burrow

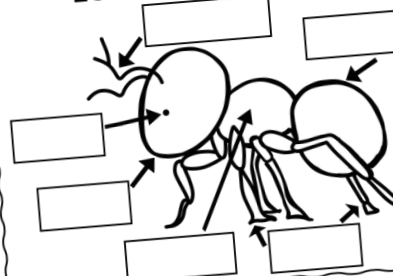
yes

no

Parts of an Ant



Name: **Let's Label the Ant!**



legs head eye thorax
antennae abdomen

legs head eye thorax
antennae abdomen

legs head eye thorax
antennae abdomen

A DAB of GLUE
will do

Does Not Burrow

Carpenter Ants and Termites

How are they similar and different?

Carpenter ants and termites are about the same size.

Ant workers are reddish-brown-colored. Termites are transparent.

Both carpenter ants and termites have six legs.

An ant's front wings are smaller than the hind wings. Termites' wings are the same size.

A carpenter ant's waist is narrow, while a termite's waist is broad.

Both carpenter ants and termites can cause damage to the wood in your house.

Carpenter ants and termites live in colonies.

Carpenter ants are nocturnal and feed on wood for food, while termites are active during the day and eat the wood they live in.

Both carpenter ants and termites swarm in the spring and early summer and then lose their wings.

ant

termite

both

Ants and Termites

Ants live in colonies.

Ants can carry objects 20 times their own body weight.

Termites can live in colonies.

Termites can live for up to 5 years.



animal research

by:

Appearance

Diet

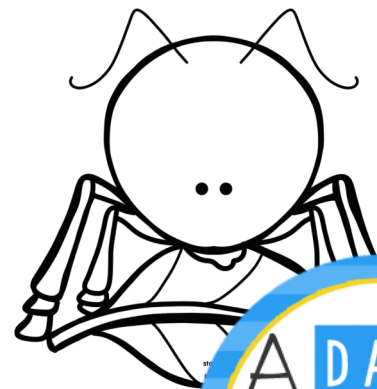
Predators

Habitat

Behaviors

Adaptations

Source



A DAB of GLUE will do

